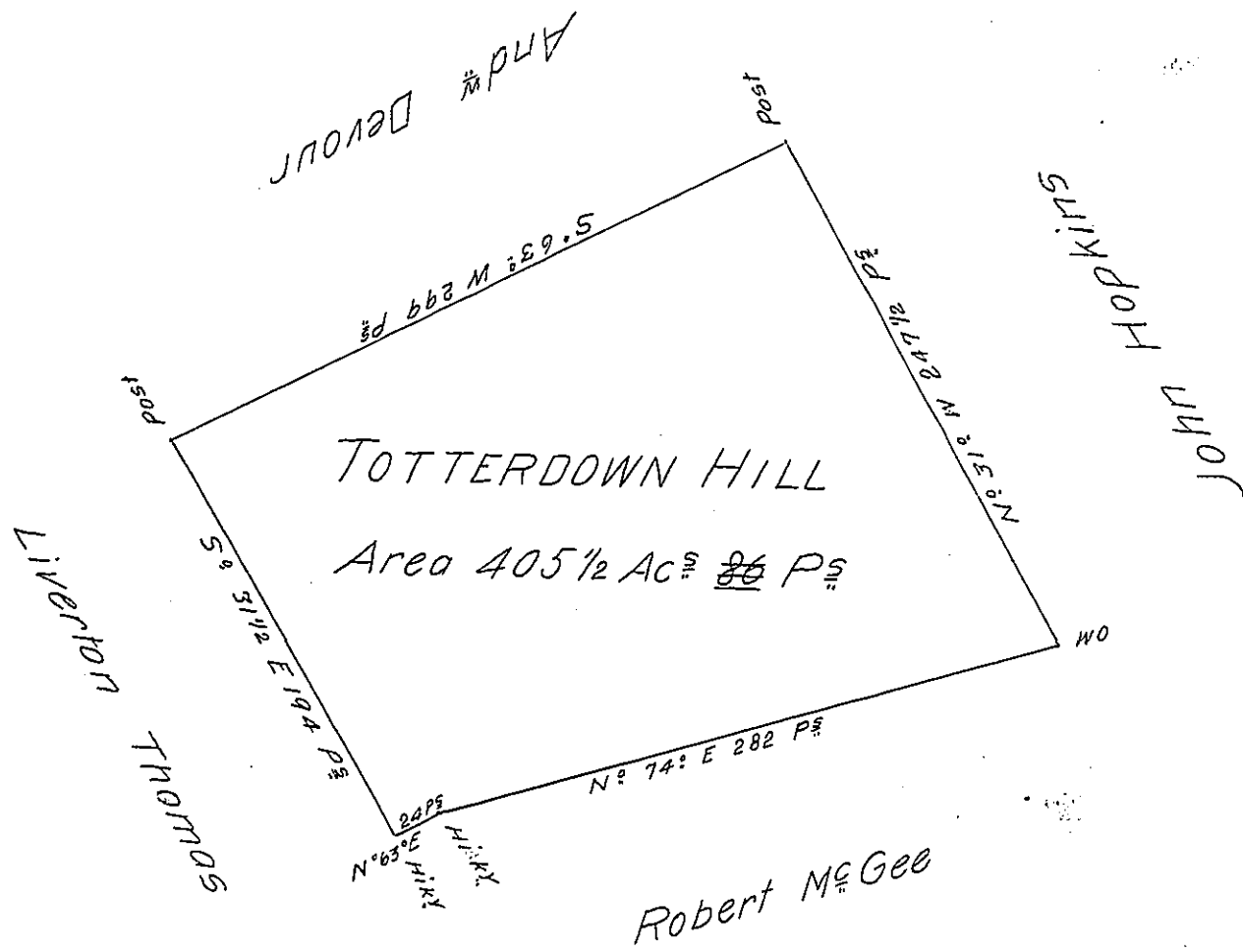


56
P12-186
3-41



A Draught of a Survey called Totterdown Hill lying on the waters of Peters Ck in Washington County cont^d 405 Ac. 86 P. strict Measure executed Feb 26th 1786 in Consequence of a Certif^e for 400 Ac. granted to And^w Devour by the Commiss^{rs} appointed by Virg^o to adjust the Titles to unpatented Lands in the Counties of Mong^o Yoh^o & Ohio, and duly entered with the County Surv^r as appears from the List of Entries transmitted from y^e Surv^r Gen^l's Office.

Ret^d 5 July 86
 Presley Nevill }
 Matt^w Ritchie } D. Su^r
 Jn^o Lukens Esq^e Sur^r Gen^l }

IN TESTIMONY that the above is a copy of the original remaining on file in the Department of Internal Affairs of Pennsylvania, made conformably to an Act of Assembly approved the 16th day of February, 1833, I have hereunto set my Hand and caused the Seal of said Department to be affixed at Harrisburg, this ninth day of June 1904

George D. Brown
 Secretary of Internal Affairs.